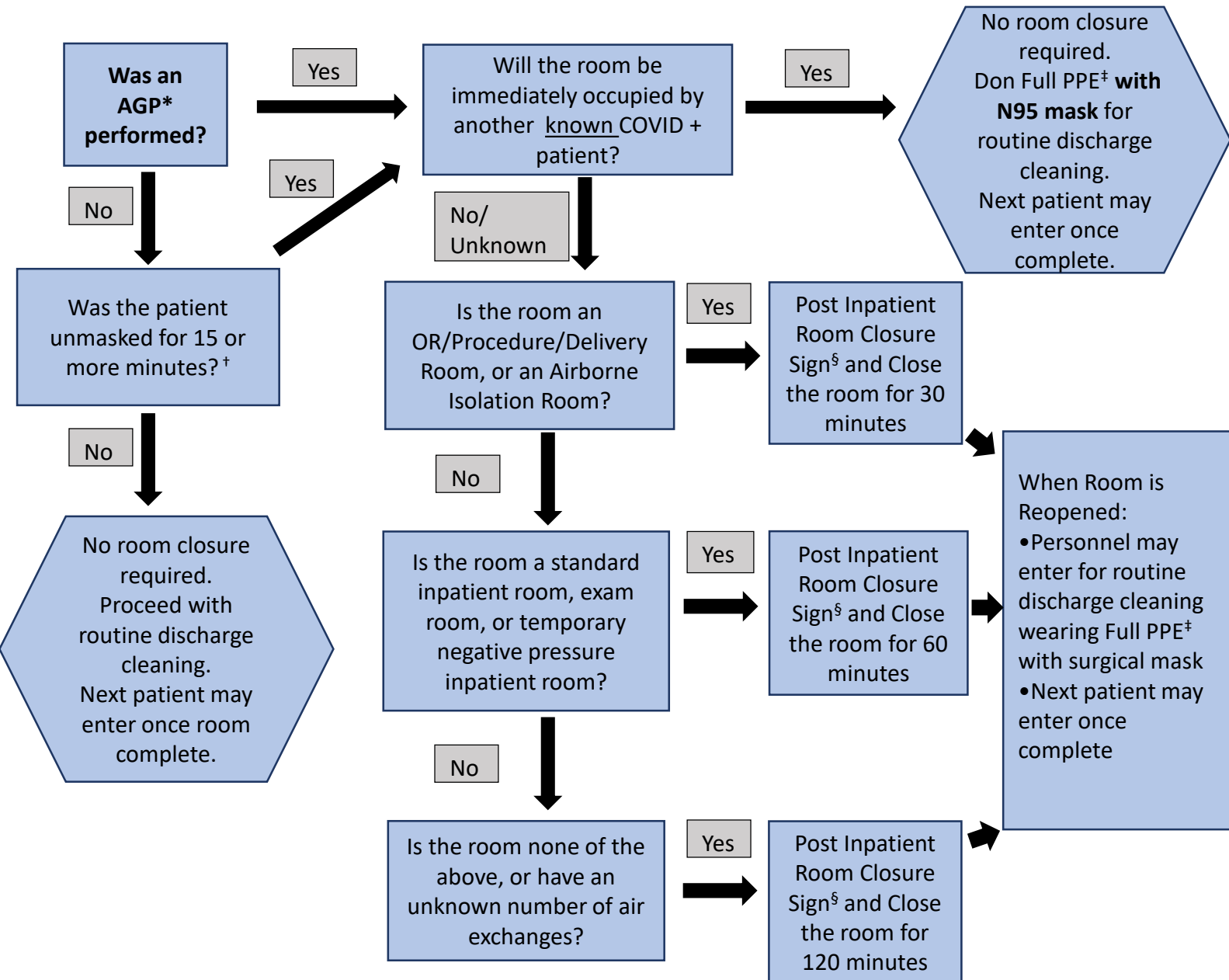


## Room Closure after COVID+/PUI Patient Discharge

### Decision Tree

Applicable to all settings including: OR, inpatient, ambulatory exam/procedure rooms



- \*AGP: Aerosol generating procedures. Examples for inpatient found [here](#), and in Ambulatory found [here](#)
- †The [CDC](#) defines an exposure as prolonged contact with an unmasked individual of 15 or more minutes
- ‡Full PPE includes eye protection, face mask (N95 or surgical mask), gown, and gloves
- §Room Closure Sign can be found [here](#)
- More information about infection prevention and control may be found [here](#)
- Room closure guidance may be found [here](#)